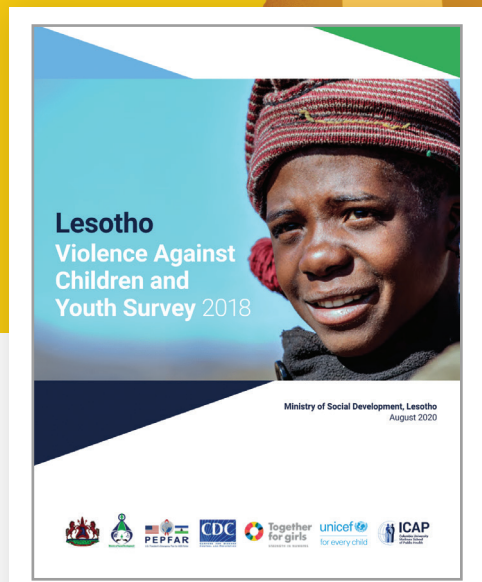


LESOTHO

In order to create a world where every child, adolescent and young person is safe, protected and thriving, we must first know the facts.

In Lesotho, girls and boys experience unacceptably high rates of sexual and physical violence

Percentage of **females** and **males** who experienced sexual or physical violence prior to age 18



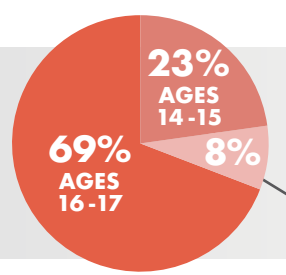
The Government of Lesotho launched the **VIOLENCE AGAINST CHILDREN AND YOUTH SURVEY REPORT** in 2020 with support from PEPFAR, CDC, UNICEF, and other partners.

18%

For many girls, the first experience of sexual intercourse is physically forced or coerced

(among those who had sexual intercourse before age 18)

Girls face particularly high risks of sexual violence, often with devastating consequences

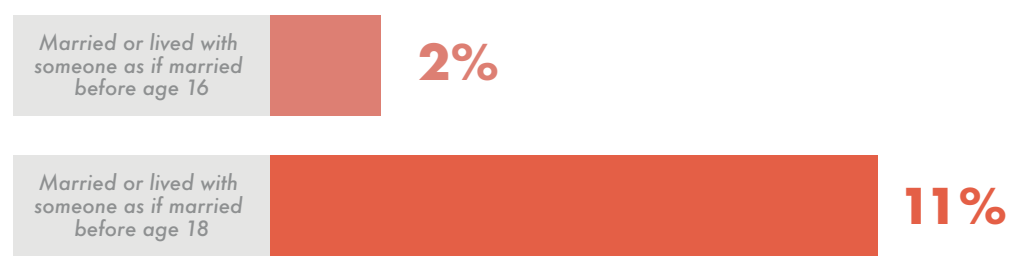


Age of first incident of physically forced or coerced sex, among those who experienced sexual violence prior to age 18

Girls are at risk of early marriage

4%
of girls who experienced physically forced or coerced sex or alcohol-facilitated sex before age 18 became pregnant*

*Among 13-24 year-olds



Percentage of **females** who **married or lived with someone as if married** prior to age 18

All data among 18-24 year-olds, unless otherwise indicated

Perpetrators of sexual violence are often someone known to the child or adolescent

Most common perpetrators of first incident of sexual violence as reported by **females** who experienced sexual violence prior to age 18

*Intimate partner is defined as spouse, boyfriend, girlfriend or romantic partner

^Estimate may be unreliable

INTIMATE PARTNER*

58%

CLASSMATE/ SCHOOLMATE

11%^

NEIGHBOR

10%

FRIEND

9%

Sexual violence often occurs in familiar locations

Location of first incident of sexual violence experienced by **females** prior to age 18



30%



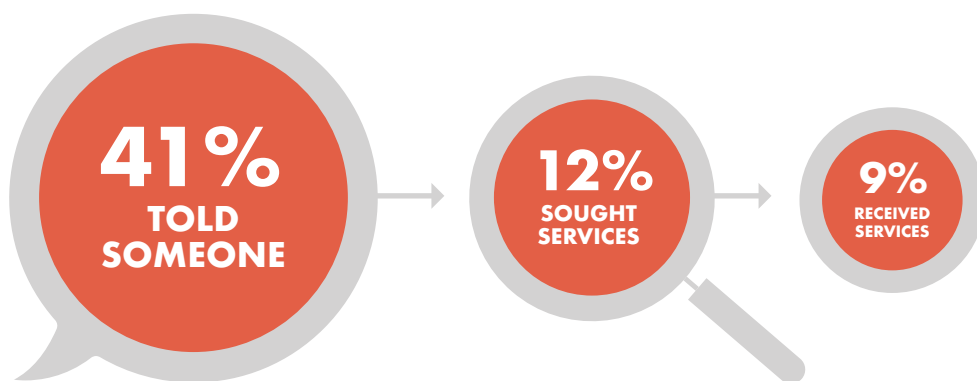
20%



19%

Girls who experience sexual violence are not getting the support and services they need

Females who told someone about, sought services and received services for sexual violence, among those who experienced sexual violence prior to age 18



The Violence Against Children and Youth Surveys Surveys are nationally representative household surveys led by national governments, with technical support from the U.S. Centers for Disease Control and Prevention (CDC) as part of the Together for Girls Partnership.

For more information, visit: togetherforgirls.org

